



The Skyline Penthouse: Soaring Above Monaco and the Mediterranean

17 800 000 €

ABOUT



The sheer majesty of this duplex Penthouse is immediately felt as you step into the vast and bright living room, where full-height glass doors frame breathtaking panoramic views.

Skyline exudes modern elegance, with sleek contemporary elements purposefully designed throughout. High-gloss furniture enhances the space by reflecting light and adding a final touch of sophistication.

The open-plan living and dining area seamlessly transitions to the state-of-the-art kitchen, fitted Gaggenau, featuring a unique 5-meter stainless steel centerpiece.

The carefully selected materials create a sense of continuity and airiness. Reflective surfaces – such as high-gloss lacquer, metals, cement resins, and natural marble – are expertly incorporated throughout the design.

This exquisite attention to detail extends into the night area. Designer bedrooms with en-suite bathrooms mirror the same tone, with suspended beds enhancing the feeling of lightness.

The feeling of airiness and levitation is particularly embodied in the masterfully crafted steel-and-glass staircase, a central architectural masterpiece.

At the top, the property's gem awaits : a rooftop terrace designed as a seamless extension of the living space, reminiscent of a yacht's deck.

The veranda reveals a fully-equipped dining area with a TV, full sound system, electric awnings, and air conditioning—all controlled by an advanced home automation system. It also includes a jacuzzi, a day head, and a luxurious hammam with a chromotherapy system.

The veranda is extended by a striking terrace accommodating the outdoor lounge area. The space includes a high-end outdoor kitchen crafted from 316-grade stainless steel, along with floor decking, both borrowed from the yacht industry.

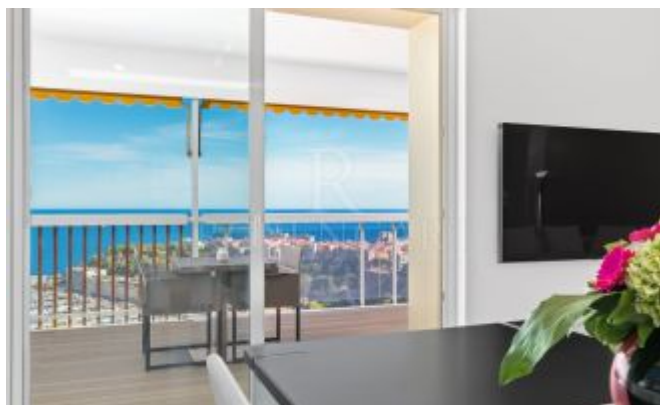
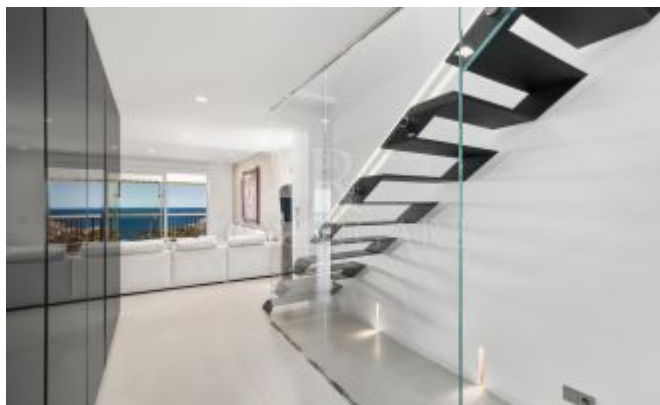
AMENITIES

Concierge service in-house
Hammam & Jacuzzi
Architect design glass and metal stair
High gloss lacquered
Full home automation with scenario

SPECIFICS

Ref:	10982
District:	Moneghetti
Total area:	303 m²
Living area:	195 m²
Terrace area:	129 m²
Room(s):	4
Bedroom(s):	2
Bathroom(s):	2
Parking space(s):	1
Penthouse:	1

PICTURES





FLOOR PLAN

